

The Critical Care and Medicine Database

Data Collected

Demographics

ADT

APACHE II

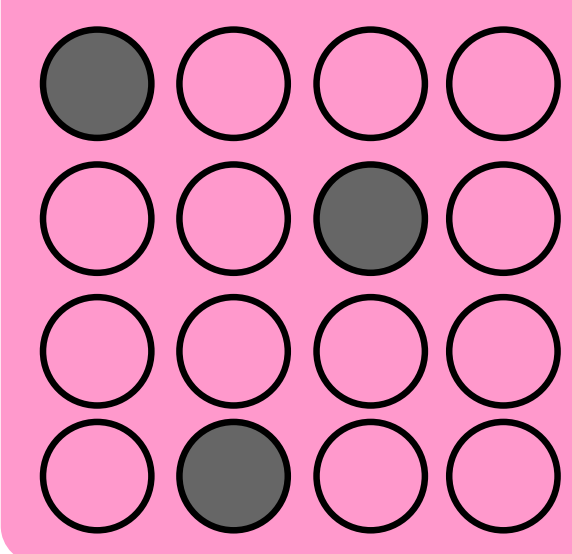
Diagnoses

Procedures

Complications

Drugs

TISS



Special Projects

CLI

VAP

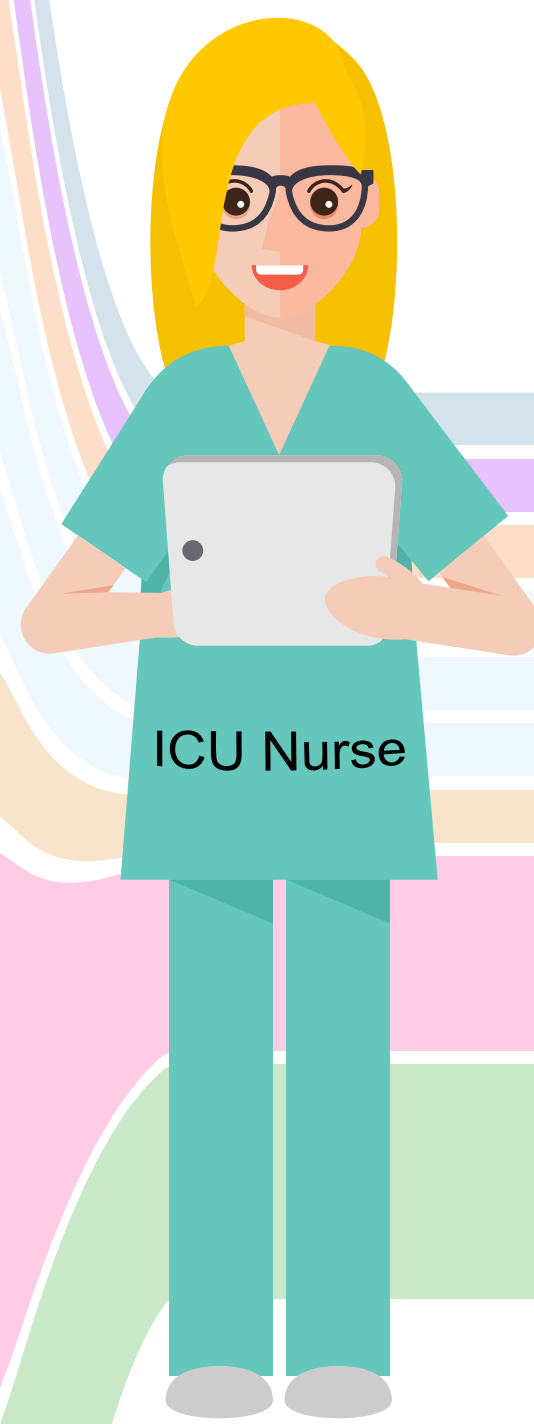
Next...?

External Sources

DSM Labs

Patient Registry
Validation Data

For more Information, see
<http://ccmdb.kuality.ca>
or contact
Julie Mojica
(jmojica@hsc.mb.ca)



Data Processing

Statistics

Uses of the Critical Care and Medicine Database

Manitoba
Centre
for Health
Policy

Publications

Critical
Care
Vital Sign
Monitoring

Your
next
project!

Resource
Use

Before/after
comparisons
for QI
Interventions

Chart
Review
Lists

Full
Statistical
Analysis

Base
population
for
Research

Regular
Management
Reports

CRRT Reason

VAP Rates

CLI Rates

Nursing Workload CRRT Days

Delirium Days Vent Days

Acuity Central Line Days

ARO Rates Pressure Ulcers

Patient Flow Re-admission Rates

Length of stay Occupancy

Night Time Discharges

Avoidable Days

Geographic analysis

Age